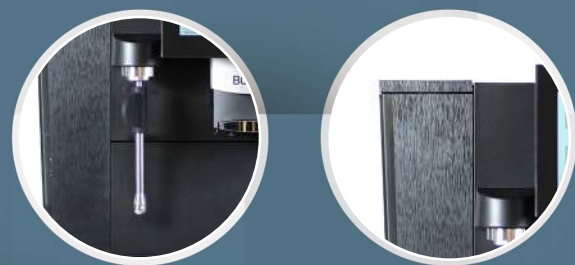


LARGE CAPACITY Classic Continuation



M 100

The brand new design with large-capacity water tank, bean bin, and coffee grounds box allows the coffee machine to operate for a whole day without interruption. The performance is also improved: the innovative milk system can easily adjust to your preferred milk temperature, and the optimized coffee pipeline ensures every cup of pure fresh coffee. E60, your classic and reliable coffee machine.



Features

- The large capacity is sufficient for small restaurants, bakeries, offices and more
- 7" color touch display with up to 20 beverages to select through one touch
- Innovative milk foam system delivers delicate foam at a proper temperature
- Coffee and milk/foam can be made simultaneously for quick efficiency
- Intelligent cleaning before making coffee ensures the tasty of the first cup
- The simple and elegant design suits any environment



Specification

Bean hopper capacity	750g
Water tank volume	6L
Heating Power	3100 W
Dimensions (D*W*H)	M100 : 559*391*572mm
Net weight	M100 : 20kg
Beverages	Espresso / Coffee / Cappuccino / Americano / Pot of Coffee / Macchiato Flat White / Hot Milk Foam / Hot Milk / Hot Water Double Espresso and more
Screen	7" colorful screen
Espresso brewer capacity	7 - 14g
Drip tray capacity	2L
Waste bin full (counter)	50 portions
Adjustable coffee spout	75 ~ 155mm
Thermoblock quantity	2
Water supply	Barrelled water + Tank water



KAAPI MACHINES INDIA PRIVATED LIMITED

No. 3320, 7th Cross, 12th A Main, HAL 2nd stage,
Indiranagar, Bangalore - 560008 Karnataka

www.kaapimachines.com

+91 7813820830

customersupport@kaapimachines.com

NORTH
+91 9731441341

SOUTH
+91 9731441341

EAST
+91 9731441341

WEST
+91 9731441341