

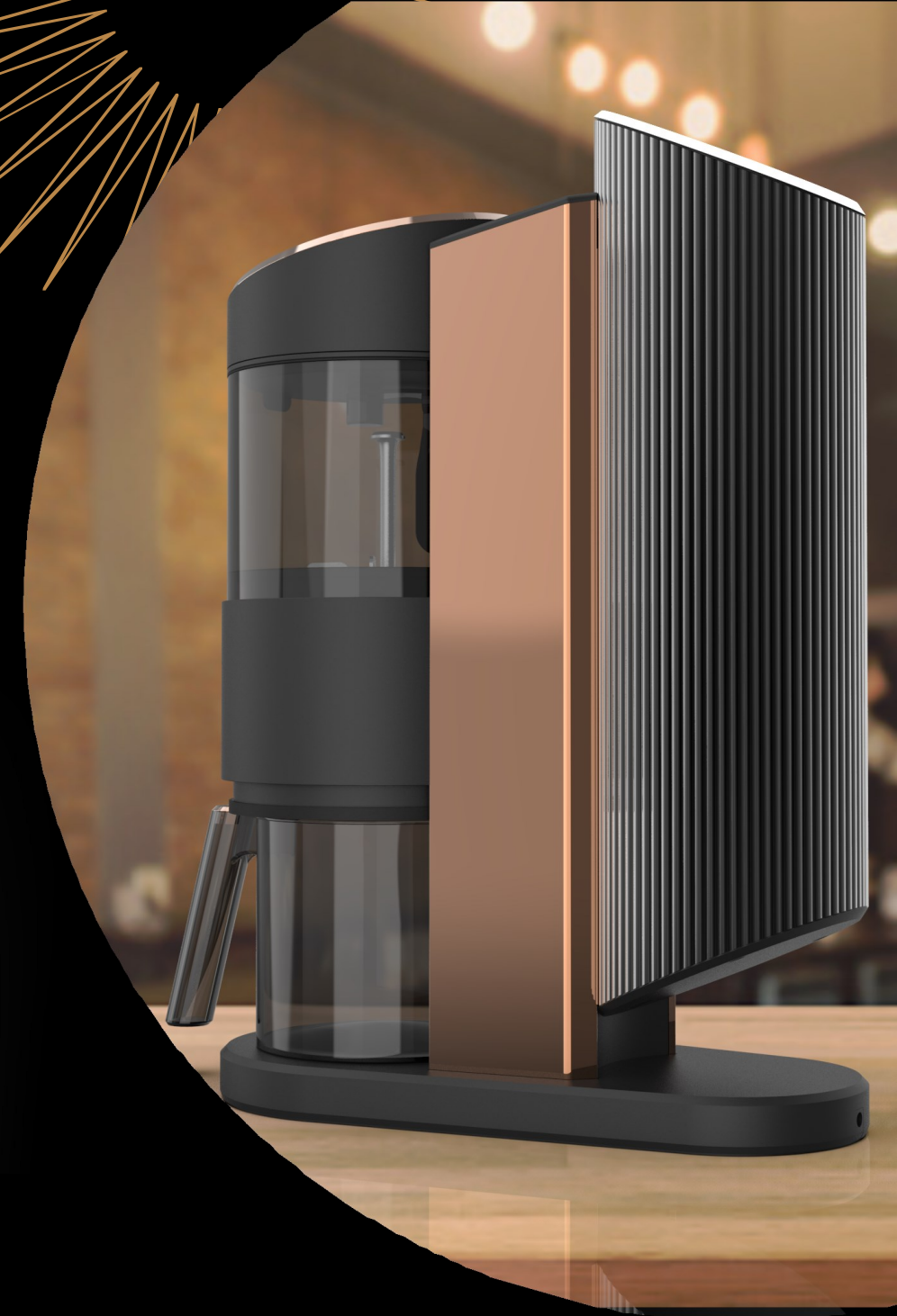
About FREDDA

FREDDA is a unique cold brew machine that is able to make, in a period of 24 hours, 480 times *more* cold brew than traditional methods.*

It is the world's first AI rapid cold brew machine that combines revolutionary technology for cold brew extraction with artificial intelligence.

*Note: * Each round can make up to 750ml of cold brew*

Life's Too Short to Wait
for Cold Brew



FREDDA

Cold Brew Maker

FREDDA
POWERED BY wistron

Why choose FREDDA?

FREDDA is fast

- **Instant cold brew**

No more waiting overnight for your cold brew coffee or tea. Ready-to-drink in a 3-5 minutes.

- **Save time**

It eliminates the need to produce and store large quantities of cold brew concentrate.

- **Better taste and freshness**

The cold brew is extracted to order instantly. Always have enough fresh cold brew to serve yourself or your customers.

FREDDA is consistent

FREDDA's high-precision digital controls guarantee consistent cold brew extraction, brew after brew. Your cold brew recipes will always be consistent.

FREDDA is smart

FREDDA's smartphone app allows you to:

- Control brewing parameters
- Create, record and push recipes to one or multiple machines in different locations
- Collect user data and statistics on brewing and machines for analysis
- Remotely diagnose problems and issue maintenance requests

